

4400 Series

STINGER 4485

4485 Capacity and Range Chart:

OPERATING WEIGHT	LOAD RATINGS IN LBS. WITH OUTRIGGERS EXTENDED						AREA OF OPERATION		
	27 FT	42 FT	56 FT	70 FT	85 FT				
577	44000						<p>360° FULL CAPACITY WORK AREA</p>		
870	31300	27000							
1065	26350	25000							
1260	22700	21425	18575						
1455	19900	18675	16100	13000					
1650	17600	16550	14175	12100					
2037	13800	13400	11375	9700	76	9550			
2510	8000	10650	9000	8750	73	7375			
30		42	8600	57	7325	65	7000	70	6875
35		30	6700	50	6900	61	5850	66	5650
40		8	3650	43	5775	56	4900	62	4700
45				34	4550	50	4650	59	3950
50				24	3525	45	3675	55	3750
55						38	2950	51	3025
60						30	2400	46	2425
65						18	1800	41	1950
70								35	1550
75								28	1225
80								18	775
	700	500	350	300	250	STOWED JIB DEDUCTIONS			

NOTE: RATINGS ABOVE THE HEAVY LINE ARE BASED ON STRUCTURAL COMPETENCE AND NOT ON MACHINE STABILITY.

JIB CAPACITIES FOR ALL BOOM LENGTHS									
CAPACITY ALERT SYSTEM, IF SO EQUIPPED, IS NOT FUNCTIONAL WHEN LIFTING WITH JIB									
LOADED BOOM ANGLE	50°	55°	60°	65°	70°	75°	78°	80°	
RETRACTED 26 FT JIB	0° OFFSET	850	1025	1525	2325	3225	4325	4925	5325
	15° OFFSET	600	750	925	1375	1750	2000	2000	2000
	30° OFFSET	500	600	675	975	1175	1275	1275	1275
EXTENDED 40 FT JIB	0° OFFSET	525	725	1125	1525	2025	2525	2825	3125
	15° OFFSET	450	525	675	850	1025	1100	1100	1100
	30° OFFSET	400	450	550	650	750	750	750	750

NOTE: Please consult the Terex Cranes full-line brochure for a complete listing of standard features and optional equipment.

4485 Optional Mounting Configurations:

Behind Cab (TC)
Rear Mount (RM)
(Some standard features for the optional mounting configurations will vary. Please consult your Terex Cranes dealer or factory for chassis and mounting requirements.)

TC 4485 Minimum Chassis Requirements:

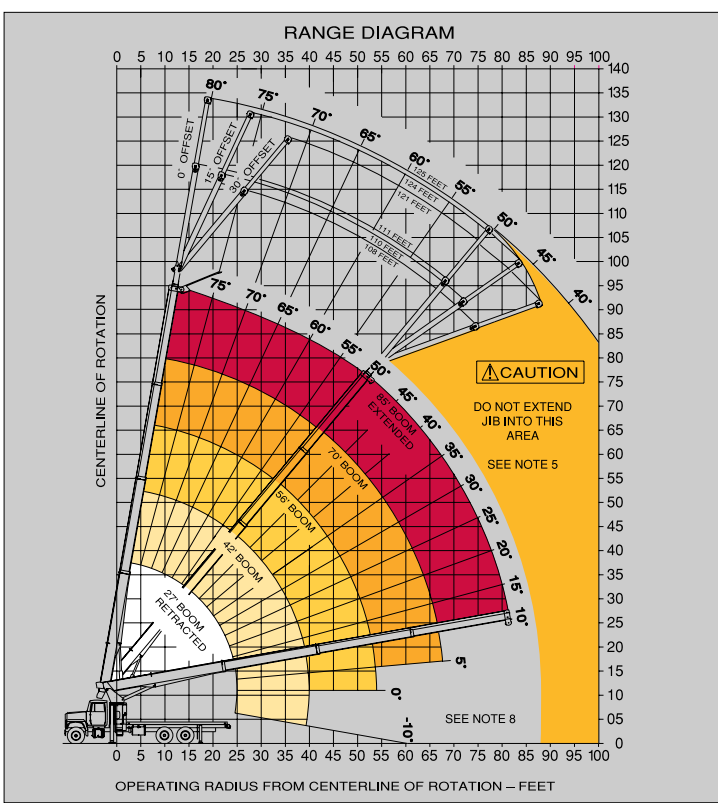
Chassis specifications are minimum for truck-crane mount. Not applicable to optional mounting configurations.

Gross Vehicle Weight Rating 52,000 lbs. (23,587 kg)
Front Axle Weight Rating 18,000 lbs. (8,165 kg)
Rear Axle Weight Rating 34,000 lbs. (15,422 kg)
Wheelbase 246 in. (6,248 mm)
Cab To Axle 168 in. (4,267 mm)
Afterframe 100 in. (254 mm)
Transmission Heavy-Duty 6-Bolt PTO (Neutral lock-up required for automatic transmission)
Electrical System Heavy-Duty
Cooling System Heavy-Duty
Frame Section Modulus26 in.³ (426 cm³)
RBM Per Frame Rail 2,860,000 in./lbs. (32,955 kg-m)

Rope and Reeving:

1 PART LINE	2 PART LINE	3 PART LINE	4 PART LINE	5 PART LINE	<p>CAUTION</p> <p>OVERLOAD AND ANTI-TWO-BLOCK SYSTEMS MUST BE IN GOOD OPERATING CONDITION BEFORE OPERATING CRANE. REFER TO OWNER'S MANUAL.</p> <p>KEEP AT LEAST 3 WRAPS OF LOADLINE ON DRUM AT ALL TIMES.</p> <p>USE ONLY 9/16" DIAMETER CABLE WITH 33,600 LB. MIN. BREAKING STRENGTH ON THIS MACHINE.</p>
 LOADS UP TO 9,500 LBS. STD. CABLE 6,720 LBS. ROT. RESIST. CABLE	 LOADS UP TO 19,200 LBS. STD. CABLE 13,440 LBS. ROT. RESIST. CABLE	 LOADS UP TO 28,800 LBS. STD. CABLE 20,160 LBS. ROT. RESIST. CABLE	 LOADS UP TO 38,400 LBS. STD. CABLE 26,880 LBS. ROT. RESIST. CABLE	 LOADS UP TO 48,000 LBS. STD. CABLE 33,600 LBS. ROT. RESIST. CABLE	

THIS MACHINE COMPLIES WITH OSHA REGULATIONS 1910.180 AND 1926.550 WHERE APPLICABLE AT DATE OF MANUFACTURE



NOTE: Diagrams depict recommended mounting dimensions. The dimensions of optional mounting configurations will vary. Please consult your dealer or Terex Cranes for specifics. Dimensions do not include load deflection.