

# Series 500C

**Maximum Capacity: 30,000 lbs. (13.6MT)**  
**Maximum Vertical Reach: 115 ft. (35.1m)**



The Series 500C medium-to-heavy-duty telescoping crane offers many new features including a split (two-piece) console cover for fast accessibility to valves and wiring; an improved high performance winch providing precise load placement; and an upgraded wiring system with shrink wrap terminal connections to prevent corrosion. Two lower sheaves in the sheave case allow four-part reeving without attaching an additional sheave at the end of the boom.

### Boom Lengths Available

- Model 562C: 24' (7.3m) to 62' (18.9m) three-section

### Jib Options (side-fold for stowing)

- 5FJ24: 24' (7.3m) for Model 562C
- 5FJ43M: 24' (7.3m) to 43' (13.1m) for Model 562C

### Rotation

- Non-continuous, 375° (standard)
- Continuous (optional)

### Winch

Line Pull Bare:

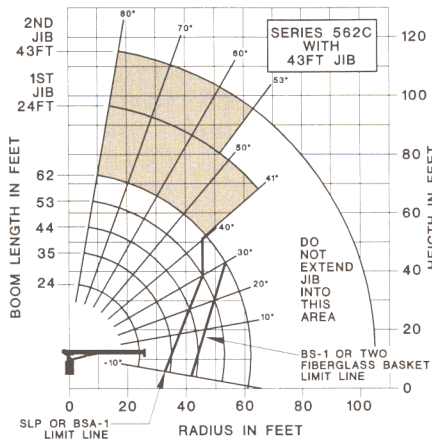
- 10,000 lbs. (4,536kg) low speed
- 3,000 lbs. (1,360kg) high speed

Line Pull Full:

- 7,000 lbs. (3,175kg) low speed
- 3,000 lbs. (1,360kg) high speed

Line Speed Full:

- 164 fpm (50m/m) low speed
- 265 fpm (80m/m) high speed



Winch line pulls may be limited by the winch capacity or the ANSI 5 to 1 cable safety factor, as follows:

Winch	Bare Drum Pull	Allowable Cable Pull
With standard rotation resistant rope	10,000 lbs. (4,536kg)	7,000 lbs. (3,175kg)
With optional 6x25 IWRC rope	10,000 lbs. (4,536kg)	8,400 lbs. (3,810kg)

### Outriggers/Stabilizers

- A-type (standard), 19'4" (5.9m) span
- A-frame rear hydraulic stabilizers, 10' (3.07m) span (standard)

JIB LOAD RATINGS				
LOAD RADIUS (FEET)	LOADED BOOM ANGLE	24FT JIB (LBS)	LOADED BOOM ANGLE	43FT JIB (LBS)
16	80	3,000		
20	77	2,700	80	2,000
25	74	2,450	78	1,850
30	71	2,100	75	1,550
35	67	1,750	72	1,350
40	63	1,450	69	1,150
45	59	1,200	66	1,000
50	55	950	63	850
55	51	800	60	700
60	46	600	58	600
65	41	550	53	550

BOOM LOAD RATINGS											LOADLINE EQUIPMENT DEDUCT
LOAD RADIUS (FEET)	LOADED BOOM ANGLE	24FT BOOM (LBS)	LOADED BOOM ANGLE	35FT BOOM (LBS)	LOADED BOOM ANGLE	44FT BOOM (LBS)	LOADED BOOM ANGLE	53FT BOOM (LBS)	LOADED BOOM ANGLE	62FT BOOM (LBS)	
4.5	80.0	30,000									DOWNHAUL WEIGHT = 150 ONE SHEAVE BLOCK = 200 TWO SHEAVE BLOCK = 355
8	70.0	17,400	77.5	15,600							
10	65.0	14,400	73.5	12,900	77.5	12,100					
12	59.0	12,500	69.5	11,200	75.0	10,300	78.5	9,750			
14	53.0	10,800	66.5	9,900	72.0	9,400	76.0	8,500	78.5	8,100	
16	48.5	9,850	62.0	8,900	70.0	8,400	73.5	7,350	76.0	7,000	
20	29.0	8,000	54.5	7,400	63.5	6,650	69.0	6,050	72.5	5,850	
25			43.0	6,000	58.0	5,520	63.5	5,000	67.0	4,450	
30			29.5	4,700	47.5	4,350	56.5	4,200	62.0	3,900	
35					37.0	3,700	49.5	3,650	58.5	3,400	
40					23.0	3,100	42.0	3,200	51.0	3,000	
45							32.0	2,700	44.0	2,800	
50							18.5	2,200	37.0	2,250	
55									27.0	1,900	
60									13.0	1,450	
	0	5,200	0	3,000	0	2,000	0	1,300	0	900	